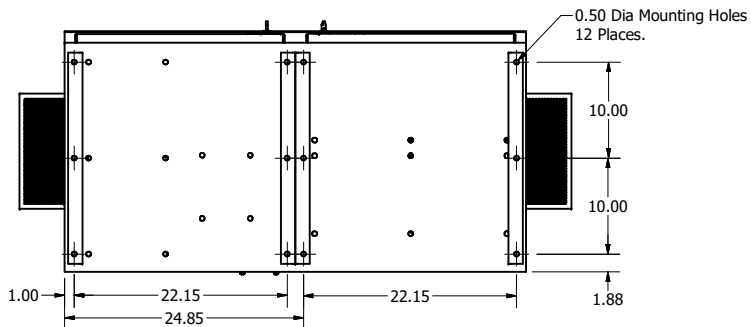
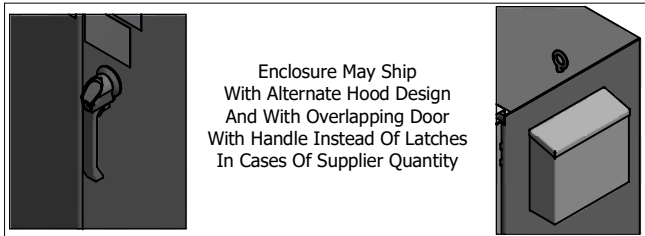
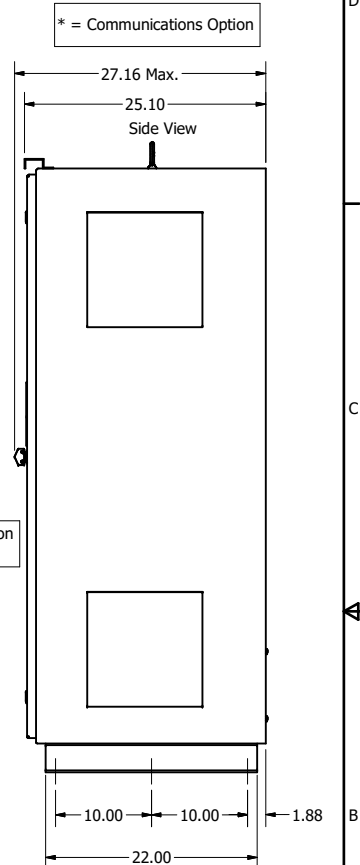
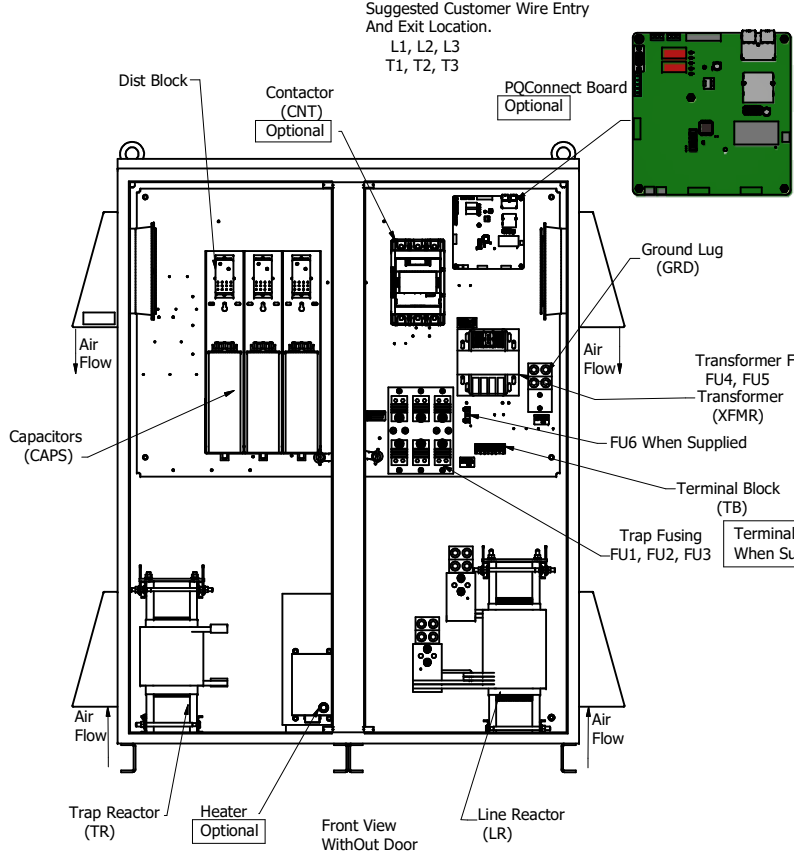
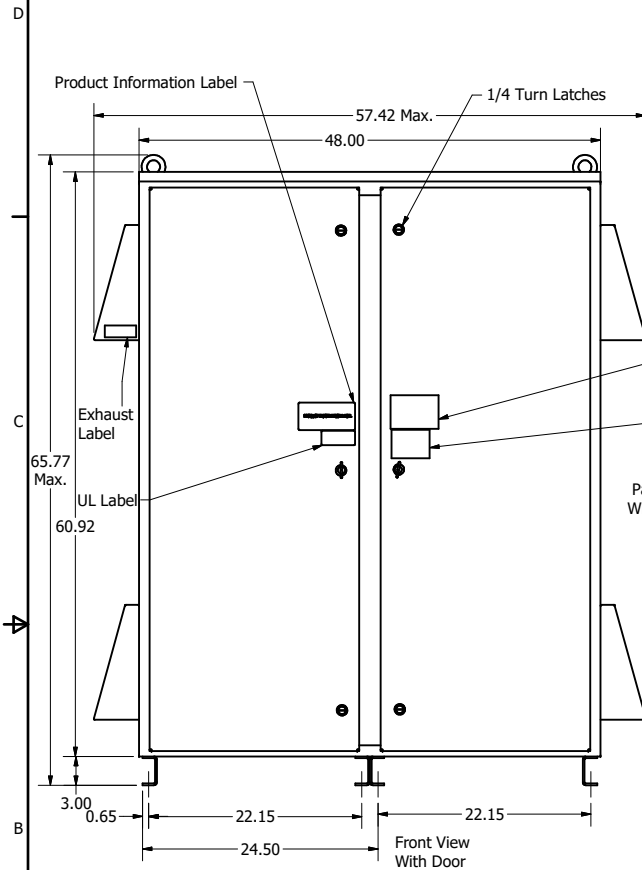


HGP Part Number	HorsePower (HP)	kVar	Harmonic	Voltage (V)	Maximum Amps (A)	Hz.	Phase
HGP0600AW3----	600	180	5th	480	720	60	3

Note: For Torque Information See IOM Manual

Customer Connections:
L1, L2, L3, T1, T2, T3, and Ground Lug.
Wire Range- Four, 600MCM-2AWG

HGP Part Number	Schematic Drawing #	Approx Weight (LBS)
HGP0600AW3S0000	28697-5S	1224
HGP0600AW3C0000	28697-5	1244
HGP0600AW3C000H	29597-H	1249
HGP0600AW3C*000	29597-PQ	1249
HGP0600AW3C*00H	29597-PCH	1254



Components	HGP0600AW3----				
	S0000	C0000	C000H	C*000	C*00H
Line Reactor (LR)	x	x	x	X	X
Trap Reactor (TR)	x	x	x	X	X
Capacitor (Cap)	x	x	x	X	X
Trap Fusing, FU1, FU2, FU3	x	x	x	X	X
Contactor (CNT)		x	x	X	X
Transformer (XFMR)	x	x	x	X	X
XFMR Fusing, FU4, FU5	x	x	x	X	X
Heater			x		X
PQConnect Board				X	X

Bottom Of Enclosure

Customer Is Responsible For Installation to Meet All National And Local Electrical Codes.

NOTE: USE ONLY HUBS OR FITTINGS THAT COMPLY WITH UL514B FOR TYPE 3R ENCLOSURES

Material(s) Shall be RoHS Compliant

G	6403, KDRY1TTX6 to KDRX1STTX6	9/7/2023	DSW	TOLERANCES (EXCEPT AS NOTED)
F	6179-1 Add Alternate Hood/Handle	02/21/23	JRN	DECIMAL
E	5628, GE to ABB CNT	6/15/2021	DSW	.XX ±.25 .XXX ±.10
D	5452, Line reactor/pt updates	11/18/2020	DSW	FRACTIONAL
C	5454 Schematic update with Heater	11/18/2020	DSW	± 1/16
B	Add PQconnect	6/11/18	DSW	ANGULAR
NO	REVISION	DATE	BY	± 1°

DESIGN BY	DATE	SCALE	REVISED BY	DATE	DWG NO.
DSW	4/30/14	1/8	DSW		105571DG

© 2023 TCI, LLC
An Official Motion Parts Company
W182N10611 (Rev. 11/16)
Germanstown, WI 53022

Harmonic Guard Passive
HGP, 600HP, 480/3/60, Type 3R

SHT.1 OF 1